



Standing Committee on Planning, Transport and City Services

Inquiry into Annual and Financial Reports 2021-2022

ANSWER TO QUESTION TAKEN ON NOTICE

Asked by Suzanne Orr MLA on Monday, 14 November 2022: Dr Brady took on notice the following question(s):

Reference: Hansard [uncorrected] proof transcript Monday, 14 November 2022, page 153

In relation to: Gungahlin District Strategy Green/Blue connections.

MS ORR: I sure do. For the blue green connections and the possible future connections, again I have got the Gungahlin map in front of me, where the possible ones are, can you just run me through what possibilities you are looking at? Like what do these lines mean?

Mr Ponton: Yes. I might ask Dr Brady to respond to that one.

Dr Brady: Yes, Ms Orr, I think for the Gungahlin one, it is best to look at that section of the district strategy that is under the blue green network. I know in the Gungahlin one some of that is around connections of the grasslands and better access to the lake from a recreational perspective. Some of the mapping that we did for that was around biodiversity connections, so it is about improving the connections, but I know in the summary of the district strategy it does talk about enhancing the connectivity corridors and particularly between some of the reserves. So that is a bit of the focus and the reason particularly in Gungahlin.

MS ORR: Yes. Just conscious of the time, Dr Brady, would you mind taking on notice of the possible connections, and there are not too many on the Gungahlin district ones, which ones are focused on biodiversity corridors and which ones would be more focussed on say amenity of the public run?

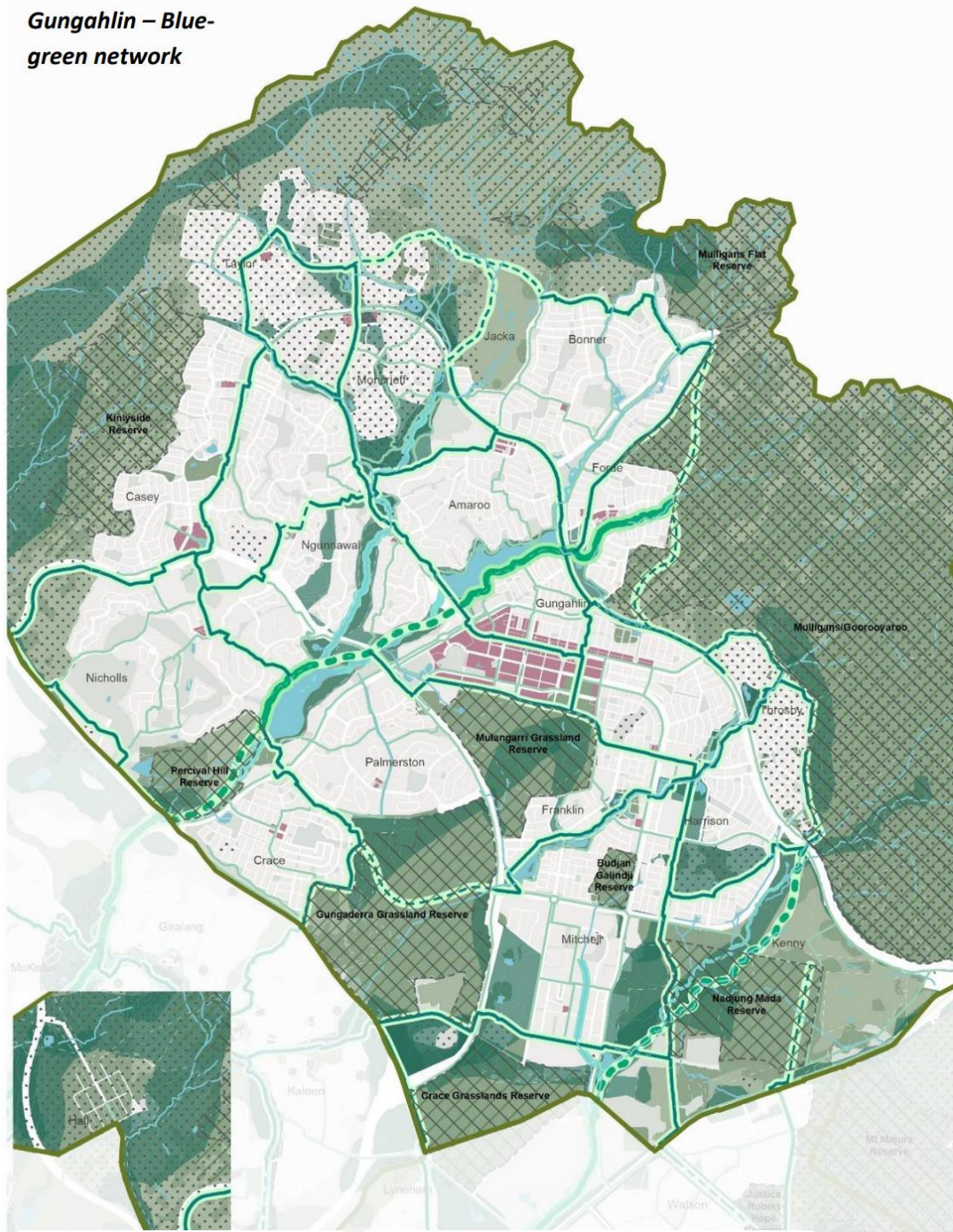
Dr Brady: Yes, we can take that on notice.

Mick Gentleman MLA: The answer to the Member's question is as follows:—

The blue-green corridors are primarily focused on biodiversity and ecological values. These areas also include urban open spaces for which recreation, amenity, active travel, urban forests and canopy cover are the primary considerations.

The blue-green networks and possible future connections are shown in the draft Gungahlin District Strategy for the ACT (Figure 13, pages 39-40) and for Gungahlin in more detail (Figure 32, pages 96-99).

Figure 32:
Gungahlin – Blue-green network



LEGEND

Note: This is a common legend for all similar district plans and not all items listed will appear on this drawing

- District Boundary
- Open Space with 5m Contours
- City/Town/Group/Local Centres
- Water Bodies
- Creek Lines

Conservation Connectivity

- Protected Flora and Fauna
- Potential Priority Connectivity Areas
- Riparian Corridors
- Heritage
- Potential Habitat Area
- Conservation Area
- Nature Reserve

Blue Green Network

- Existing Connections**
 - Primary
 - Secondary
 - Tertiary
- Possible Future Connections**
 - Primary
 - Secondary

Possible connections focused on biodiversity corridors

Initiatives and connections focused on biodiversity and ecological values through blue-green networks in Gungahlin include:

- Enhance connectivity corridors and links between areas of threatened species and nature reserves including:
 - between Hall Cemetery to Kinlyside, including Halls Creek and Gooromon Ponds Creek, and the hills and ridges around the north of the district connecting up to Mulligans Flat Nature Reserve, Goorooyaroo Nature Reserve and into East Canberra (Mount Majura Nature Reserve).
 - between Percival Hill Nature Reserve through Crace to Gungaderra Grasslands Nature Reserve, Mulangarri Nature Reserve and Crace Grasslands Nature Reserve.
 - Budjan Galindji Nature Reserve across Harrison to Goorooyaroo Nature Reserve.
- Enhance and restore waterways and riparian corridors along the two main Ginninderra Creek tributaries from Percival Hill Nature Reserve through to Taylor and Bonner, Gungaderra Creek and Sullivans Creek waterways and around Yerrabi and Gungahlin Ponds.
- Deliver Healthy Waterways Stage 2 initiatives for the district including the Yerrabi Pond floating wetland to enhance water quality.
- Explore opportunities to establish wildlife crossings on the Federal Highway and Horse Park Drive to re-establish connectivity between the important woodland and grassland habitat of Nadjung Mada, Goorooyaroo and Mount Majura nature reserve.

Possible connections initiatives focused on public realm include:

- The urban open space network and the public realm (including road corridors) can also contribute to creating and enhancing connections in the blue-green network and promoting environmental values. These areas are primarily managed for recreational and social values in open spaces across the district, including in new greenfield suburbs such as Kenny and in new release areas in Taylor and Jacka. The draft District Strategy refers to Water Sensitive Urban Design being applied to enhance public realm where possible as well as place making in more urban settings.

Approved for circulation to the Standing Committee on Planning, Transport and City Services

Signature: 

Date: 23/11/2022

By the Minister for Planning and Land Management, Mick Gentleman MLA