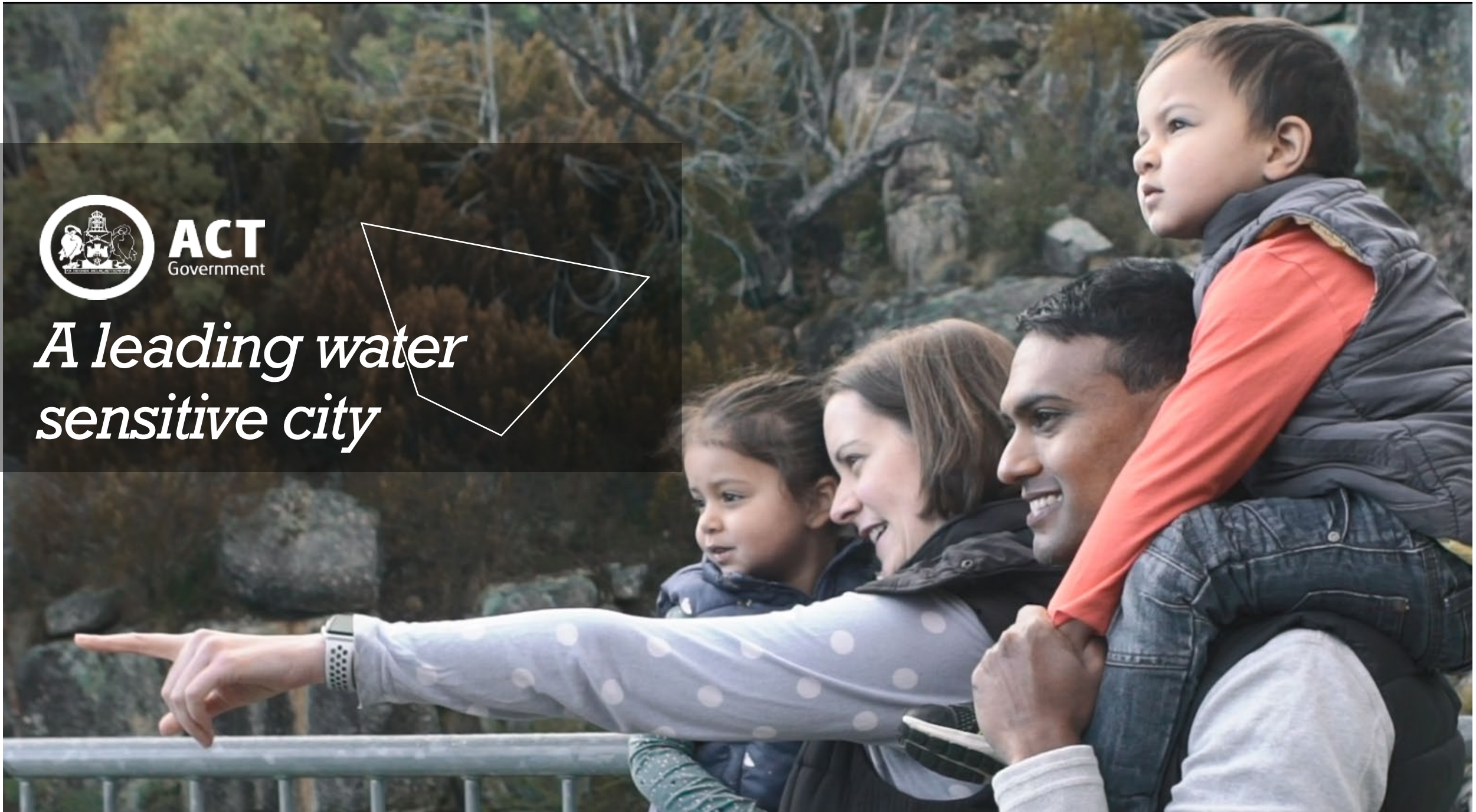




**ACT**  
Government

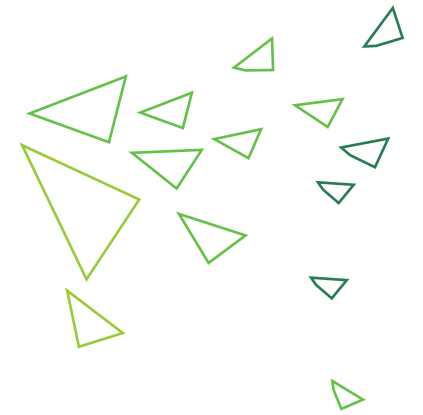
*A leading water  
sensitive city*





# Murray Darling Basin Water Infrastructure Program

**Content**



**Context**

**Improving**



**Water Security**



**Water Quality**



**Wellbeing**

**Resourcing**

**Next Steps**



- Basin jurisdictions commitment to 450 GL by June 2024 for environmental flows.
- Environmental flows mitigate issues like, fish deaths, blue green algae and conserve important wetlands (Ramsar Wetlands)
- ACT committed to investigate 15 GL of savings
- 1 GL = 500 Olympic swimming pools
- ACT will find 'urban water savings'
- ACT water resource plan – sets the policy context.



## CONTEXT

### Murray Darling Basin Plan



## **Long-term water security and drought resilience are critical to ACT's future.**

- That's why we will deliver a range of water efficiency projects
  - Fixing leaking pipes
  - Installing water saving appliances
  - Demand management (education)
  - Storm-water harvesting
  - Water efficient developments
- As outlined in our Water Prospectus we will save at least 15GL. With detailed business cases to be developed.
- Adopting best practice Water Sensitive Urban Design principles.



## **WATER SECURITY**

**A leading water sensitive city**



## Clean water for drinking, recreation and amenity is fundamental.

- That's why we will deliver a range of water quality projects including\*
  - Naturalising concrete storm water drains
  - Restoring catchments (eg Lower Cotter)
  - Creating rain gardens and wetlands
  - Protecting catchments in Namadgi National Park
  - Reducing risk from large scale wildfires
  - Planting more trees and increasing canopy cover by at least 30%
- We will build on the success of the Healthy Waterways projects.

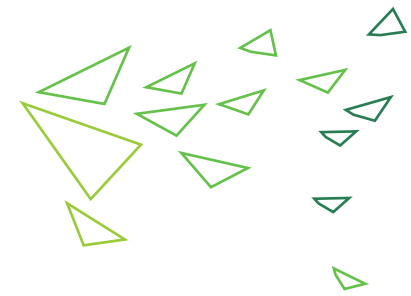


\* Funding from the MDBWIP can support these ongoing activities.



## WATER QUALITY

### Protecting our catchments



## **Clean and reliable water is critical for the wellbeing of all Canberrans**

- Waterways (and their surrounds) provide essential Living Infrastructure
  - for drinking water
  - for keeping the city cool
  - as a corridor for commuting
  - as wildlife corridors
  - as places to recreate, contemplate and connect with each other
  - as biodiversity refugia
- Water is essential for our survival.



**WELLBEING**

**Nature the foundation**



# RESOURCING

## Funding the program

- Initial 4.9GL of water to be sold to Commonwealth in 2019/2020
  - $\$7 \text{ M/GL} \times 4.9\text{GL} \times 1.75 = \$60\text{M}$
  - **Cwlth mandates that the revenue be used exclusively to deliver water efficiency/quality projects**
  - Sustainable funding model
  - Water Abstraction Charge paid by the Commonwealth Environment Water Holder (\$1.5M/annum)
- NO impact on water security as water taken from below water supply area and below sewage return flows
- Remaining 10.1GL dependent on outcomes of business case prepared over the next 12 months

# NEXT STEPS



**SECURITY**

+



**QUALITY**

+



**WELLBEING**

Following your endorsement we will

1. Confirm sale of 4.9GL to the Commonwealth
2. Develop detailed business case for 10.1 GL – (this will come back to this committee for consideration)
3. Establish a sustainable funding model to deliver in perpetuity “environmental” good
4. Deliver water saving and water quality projects (environmental good)





# Questions