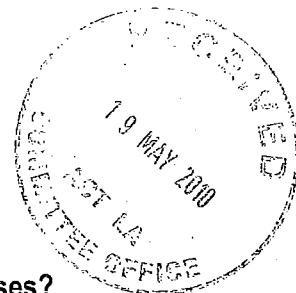


Estimates Hearing – Question on Notice



1. **How many staff are employed to conduct inspections of various businesses?**

The Health Protection Service of ACT Health regulates businesses that conduct public health risk activities. Public Health Officers are authorised officers for the purpose of the *Public Health Act 1997* or a provision of this Act. Public Health Officers, who are authorised to enforce the *Food Act 2001* were formerly known as Environmental Health Officers or health inspectors.

I understand that there are 15 Public Health Officers within the Health Protection Service who conduct regular inspections of various businesses, such as food businesses, boarding houses, cooling towers, hairdressers, health care facilities, infection control activities and investigate complaints in terms of various public health issues. There are also 8 additional authorised Public Health Officers (including the Director Health Protection Service, senior managers from the Environmental Health and Communicable Disease Control sections and officers from the Environmental Health Project team) who are able to conduct inspections if and when it is necessary.


2. **How many business are inspected?**

There are currently 3,756 separate businesses/ activities regulated by the Health Protection Service under the *Public Health Act 1997* and the *Food Act 2001*. For the period from 1 April 2009 to 30 April 2010, the Health Protection Service conducted 2195 inspections associated with these businesses/activities.

This data excludes radiation safety and medicines and poisons activities as the relevant data bases could not be interrogated in time to provide this advice.

3. **How often are these premises inspected?**

The frequency of inspections is generally based on a public health risk that a particular business/activity may pose. This means that, for example in relation to food premises, Public Health Officers would give priority to high-risk premises (e.g. hospital kitchens) and such premises would be inspected more frequently than low risk premises such as fruit and vegetable shops. In general the frequency of inspection of businesses/activities would be between 1-2 years depending on risk and performance/compliance history.

 A.C.T. LEGISLATIVE ASSEMBLY COMMITTEE OFFICE	
EXHIBIT	09
DATE RECEIVED	19 May 2010
INQUIRY	Estimates 2010-11

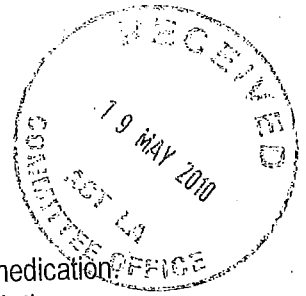
4. What does the measure 'percentage compliant' mean?

'Percentage compliant' is calculated by dividing the number of inspected premises assessed as being compliant by the total number of premises inspected for a given period.

5. What are the trends in compliance rates?

Inspection compliance rates for licensable, registrable and non-licensable activities

Year	Target (%)	Result (%)
2008/2009	85	90
2007/2008	80	90
2006/2007	80	92
2005/2006	70	90
2004/2005	70	93



Estimates Hearing 17-19 May

Questions on Notice: - AMC - Hume Health Centre

1. What percentage of prisoners are released with medication packs?

Within the AMC, medications are dispensed from medication packs that contain 7 days of medication. These packs are delivered weekly. On release from the AMC, all prisoners are provided with the remainder of their medication packs.

The Corrections Health Program has processes in place to ensure this also occurs if inmates are released directly from the courts. In this case the Custodial Officers transport the medication packs to the court as part of the inmate's property.

2. How many days of medication are given? (When prisoners are released)

Prisoners are given the remainder of their medication pack.

As medication packs are received weekly on Thursdays at the Hume Health Centre, the number of days of medication that is provided is dependent on the day of the week.

3. What is the current VMO rate?

\$207.14 per hour for clinical sessions (a clinical session is a two hour period)
On-call rate, per 24 hours is \$275.44.

4. Dental patient numbers at the AMC

2008-09	19 prisoners received dental care (total number of treatments 92)
2009-10	197 prisoners received dental care (total number of treatments 1513)

5. What programs are available for Women's?

A Women's Health Clinic is run once a week at the Hume Health Centre by the Corrections Health Program.

Women also have access to other ACT Health specialist services, such as the Sexual Health Clinic, Obstetrics and Gynaecology at TCH.

6. Methadone clients at AMC: - What percentage of prisoners are on the methadone program?

Currently 221 detainees are in the AMC of which 61 are being prescribed methadone. This is 28% of inmates.

7. Mental Health at AMC: - What percentage of prisoners have been seen by Mental Health?


Currently 221 detainees are in the AMC of which MHACT are seeing 82. This is 37% of inmates.

8. Corrections Budget for 2009-2010?

Net operating Budget	\$2,133,882
Employee Expenses	\$1,602,371
Operating Expenses	\$ 531,511

I have the breakdown of employee expenses if needed

Katrina Bracher

 A.C.T. LEGISLATIVE ASSEMBLY COMMITTEE OFFICE	
EXHIBIT	10
DATE RECEIVED	19 May 2010
INQUIRY	Estimates 2010-11

A.C.T. LEGISLATIVE ASSEMBLY COMMITTEE OFFICE	
EXHIBIT	11
DATE RECEIVED	19 May 2010
INQUIRY	Estimate 2010-11

Authorised for publication



Progress Report to the Budget Estimates Committee May 2010 Update on the ACT Health Gender Analysis Pilot Project

Background:

On 31 October 2008, the Parliamentary Agreement between the ACT Labor Party and the ACT Greens committed to phase in the publication of gender impact statements and gender disaggregated data associated with ACT Government legislation, policies, budgets and annual reports by 2010. Following this commitment, Minister Katy Gallagher, the then Minister for Women, agreed to ACT Health conducting a gender analysis pilot evaluation project that will inform the broader roll out of the initiative across ACT Government agencies. The Office for Women (DHCS) and the Community Health Policy Unit (ACT Health) worked collaboratively to develop a pilot project plan.

ACT Health Pilot Gender Analysis Project:

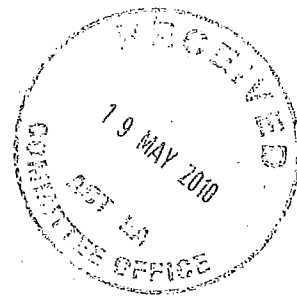
The ACT Health Policy Division has carriage of the ACT Health pilot project and was assisted by a project working group (5 staff in total) including data management and epidemiology expertise. In November 2009, in preparation for the pilot project, ACT Health staff attended two day gender analysis training provided by the Flinders University Gender Consortium and funded by DHCS.

The subject of the pilot analysis was a non gender specific service of Mental Health ACT (MHACT) - specifically the *National Safety Priorities Project: Reducing Seclusion and Restraint Beacon Demonstration Site Project* in the psychiatric inpatient facility at the Canberra Hospital. Capacity to conduct and evaluate the pilot was enhanced by the availability of a data rich environment that included a range of sex-disaggregated data. The project highlighted the importance of comprehensive sex disaggregated data for effective gender impact analysis. Through the *ACT Women's Plan 2010-2015*, the Office for Women will collect sex disaggregated data from within ACT Government departments and external sources to establish benchmarks and enhance data on women and girls over the life of the Plan.

A range of gender analysis tools were reviewed in the training and tested in the pilot. ACT Health has identified the tools that are most appropriate for the agency. The Pilot Project evaluation report is nearing completion and includes a Gender Impact Statement for the pilot project and an ACT Health policy on gender mainstreaming. The report will be provided to the Office for Women (DHCS) late May 2010. Implications for broader roll out of the initiative across ACT Government agencies will be advised by DHCS.

The pilot project is one element of the gender specific planning framework articulated in *Improving women's access to health care services and information: A Strategic Framework 2010 - 2015* which includes:

- ACT Health commitment to incorporate gender mainstreaming across service delivery areas where appropriate, supported by workforce development initiatives, evidence based research and the use of emerging technology.
- Development of an ACT Health policy on gender mainstreaming and consideration of an appropriate gender impact analysis tool for the agency.
- Apply gender impact analysis in the process of policy development and health services planning, including models of care.
- Assess the feasibility of collecting and collating local population data on health service utilisation to improve gender equity.
- Establish a Women's Health Plan Advisory Network to facilitate access to continuity of care for all women.



Budget Estimates

Topic: List of current Epidemiology Branch Reports and Projects


Reports

Chief Health Officer's Report 06-08 (in final draft)
Australian Secondary Students' Alcohol and Drug (ASSAD) Report 09 (in draft)
ACT Year 6 Physical Activity and Nutrition Report 09 (in draft)
Maternal and Perinatal Report 98-08 (in process, due out August)
Young Person's Health Survey in process
Review of Breast Cancer in the ACT 94-07 (in final edit)

Projects

Preparing for ACT General Health Survey to start shortly with new questions June 2010
Ongoing data linkage
Research project with Centre for Mental Health Research (ANU) involving analysis of PATH survey data
Routine ongoing Management of ACT Cancer Registry and Maternal and Perinatal data collection
Preparation for 2010 ASSAD and ACT Year 6 Physical Activity and Nutrition Surveys
Routine reporting on population health data and evaluation
Co-ordination of population health related performance indicators for COAG, National Health Care Agreement and National Preventive Health Partnership

Dr Charles Guest
Chief Health Officer

		A.C.T. LEGISLATIVE ASSEMBLY COMMITTEE OFFICE	
EXHIBIT	12		
DATE RECEIVED	19 May 2010		
INQUIRY	Estimates 2010-11		


Authorised for publication

Tuggeranong CHC Expansion

Basement = 800m²

Clinical Area (over two floors) = 1070m²



 A.C.T. LEGISLATIVE ASSEMBLY COMMITTEE OFFICE	
EXHIBIT	13
DATE RECEIVED	19 May 2010
INQUIRY	Estimates 2010-11

General Notes

1. THE CHANGES ARE INDICATED BY DASHES AND DIMENSION LINES.
2. THE CHANGES ARE INDICATED BY DASHES AND DIMENSION LINES.
3. THE CHANGES ARE INDICATED BY DASHES AND DIMENSION LINES.
4. THE CHANGES ARE INDICATED BY DASHES AND DIMENSION LINES.
5. THE CHANGES ARE INDICATED BY DASHES AND DIMENSION LINES.

Underground service notes:
 1. Underground service has been located and shown on this plan. It is shown in accordance with the following notes:
 2. The plan has been made in accordance with the following notes:
 3. The plan has been made in accordance with the following notes:
 4. The plan has been made in accordance with the following notes:
 5. The plan has been made in accordance with the following notes:

NO.	DATE	BY	CHKD.	APP'D.
1	10/1/00	J. J. J.	J. J. J.	J. J. J.
2	10/1/00	J. J. J.	J. J. J.	J. J. J.
3	10/1/00	J. J. J.	J. J. J.	J. J. J.
4	10/1/00	J. J. J.	J. J. J.	J. J. J.
5	10/1/00	J. J. J.	J. J. J.	J. J. J.

ACT REQUIREMENT
 1. ACT REQUIREMENT
 2. ACT REQUIREMENT
 3. ACT REQUIREMENT
 4. ACT REQUIREMENT
 5. ACT REQUIREMENT

BLOCK 20 & 21
 SECTION 19
 DIVISION GREENWAY

PLAN AND CONTOUR
 SURVEY

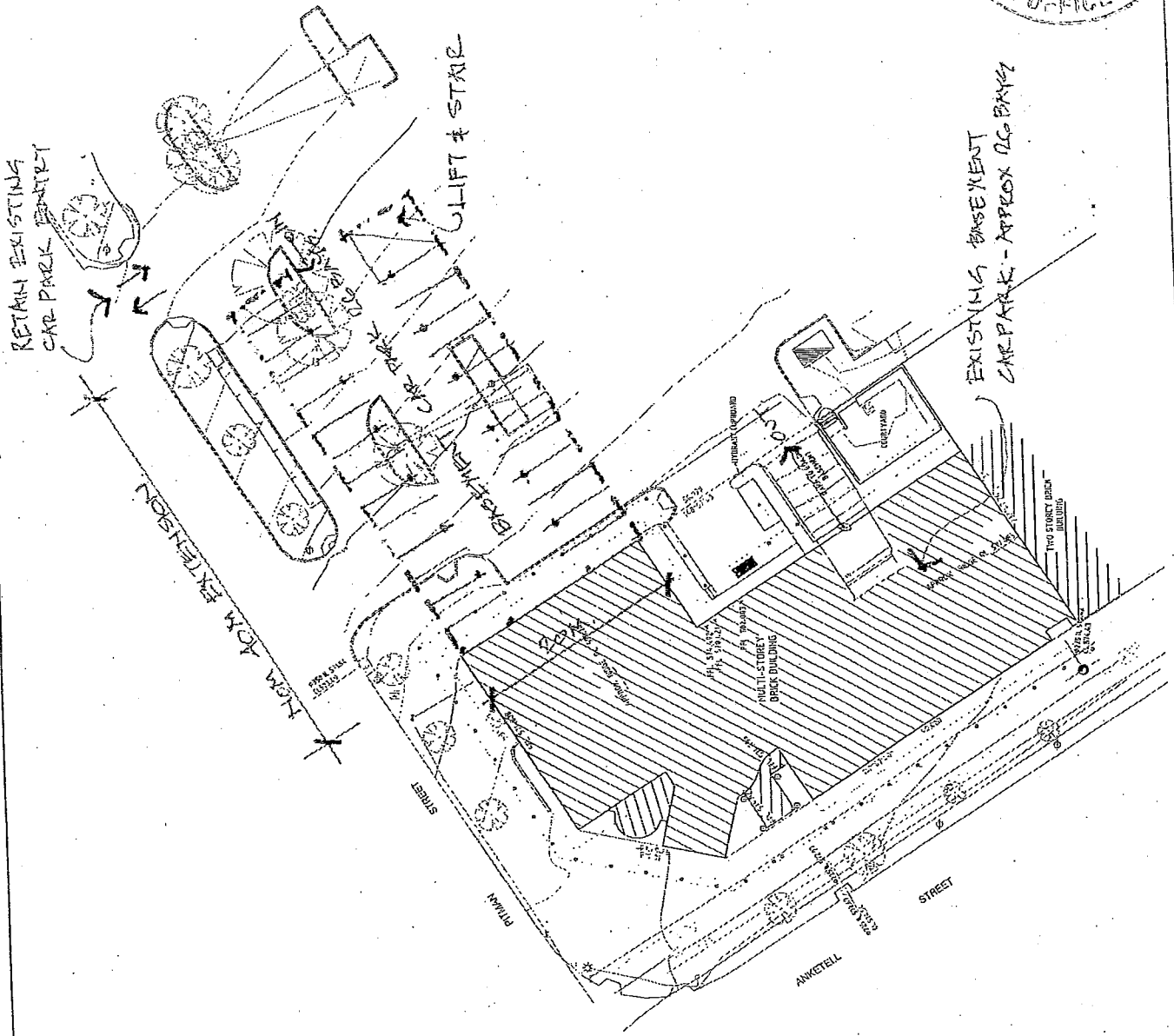
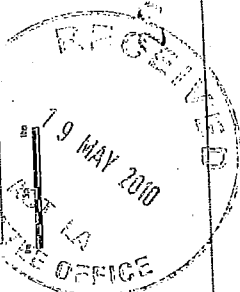
12,000 (6.1)

12,000 (6.1)

12,000 (6.1)

LEGEND

- 1. Finish Floor Level
- 2. Billboard Barrier
- 3. Existing PG
- 4. Existing S&W Station
- 5. Street Light
- 6. Water Stop Valve
- 7. Hydrant
- 8. Sewer Manhole
- 9. Catch Basin
- 10. Catch Pit
- 11. Gas Meter
- 12. Street Light
- 13. Traffic Light
- 14. Sign
- 15. Underground Structure Line
- 16. Underground Structure Line
- 17. Underground Structure Line
- 18. Underground Structure Line
- 19. Underground Structure Line
- 20. Underground Structure Line
- 21. Underground Structure Line
- 22. Underground Structure Line
- 23. Underground Structure Line
- 24. Underground Structure Line
- 25. Underground Structure Line
- 26. Underground Structure Line
- 27. Underground Structure Line
- 28. Underground Structure Line
- 29. Underground Structure Line
- 30. Underground Structure Line
- 31. Underground Structure Line
- 32. Underground Structure Line
- 33. Underground Structure Line
- 34. Underground Structure Line
- 35. Underground Structure Line
- 36. Underground Structure Line
- 37. Underground Structure Line
- 38. Underground Structure Line
- 39. Underground Structure Line
- 40. Underground Structure Line
- 41. Underground Structure Line
- 42. Underground Structure Line
- 43. Underground Structure Line
- 44. Underground Structure Line
- 45. Underground Structure Line
- 46. Underground Structure Line
- 47. Underground Structure Line
- 48. Underground Structure Line
- 49. Underground Structure Line
- 50. Underground Structure Line
- 51. Underground Structure Line
- 52. Underground Structure Line
- 53. Underground Structure Line
- 54. Underground Structure Line
- 55. Underground Structure Line
- 56. Underground Structure Line
- 57. Underground Structure Line
- 58. Underground Structure Line
- 59. Underground Structure Line
- 60. Underground Structure Line
- 61. Underground Structure Line
- 62. Underground Structure Line
- 63. Underground Structure Line
- 64. Underground Structure Line
- 65. Underground Structure Line
- 66. Underground Structure Line
- 67. Underground Structure Line
- 68. Underground Structure Line
- 69. Underground Structure Line
- 70. Underground Structure Line
- 71. Underground Structure Line
- 72. Underground Structure Line
- 73. Underground Structure Line
- 74. Underground Structure Line
- 75. Underground Structure Line
- 76. Underground Structure Line
- 77. Underground Structure Line
- 78. Underground Structure Line
- 79. Underground Structure Line
- 80. Underground Structure Line
- 81. Underground Structure Line
- 82. Underground Structure Line
- 83. Underground Structure Line
- 84. Underground Structure Line
- 85. Underground Structure Line
- 86. Underground Structure Line
- 87. Underground Structure Line
- 88. Underground Structure Line
- 89. Underground Structure Line
- 90. Underground Structure Line
- 91. Underground Structure Line
- 92. Underground Structure Line
- 93. Underground Structure Line
- 94. Underground Structure Line
- 95. Underground Structure Line
- 96. Underground Structure Line
- 97. Underground Structure Line
- 98. Underground Structure Line
- 99. Underground Structure Line
- 100. Underground Structure Line



UNITS: 1/8" = 1'-0"