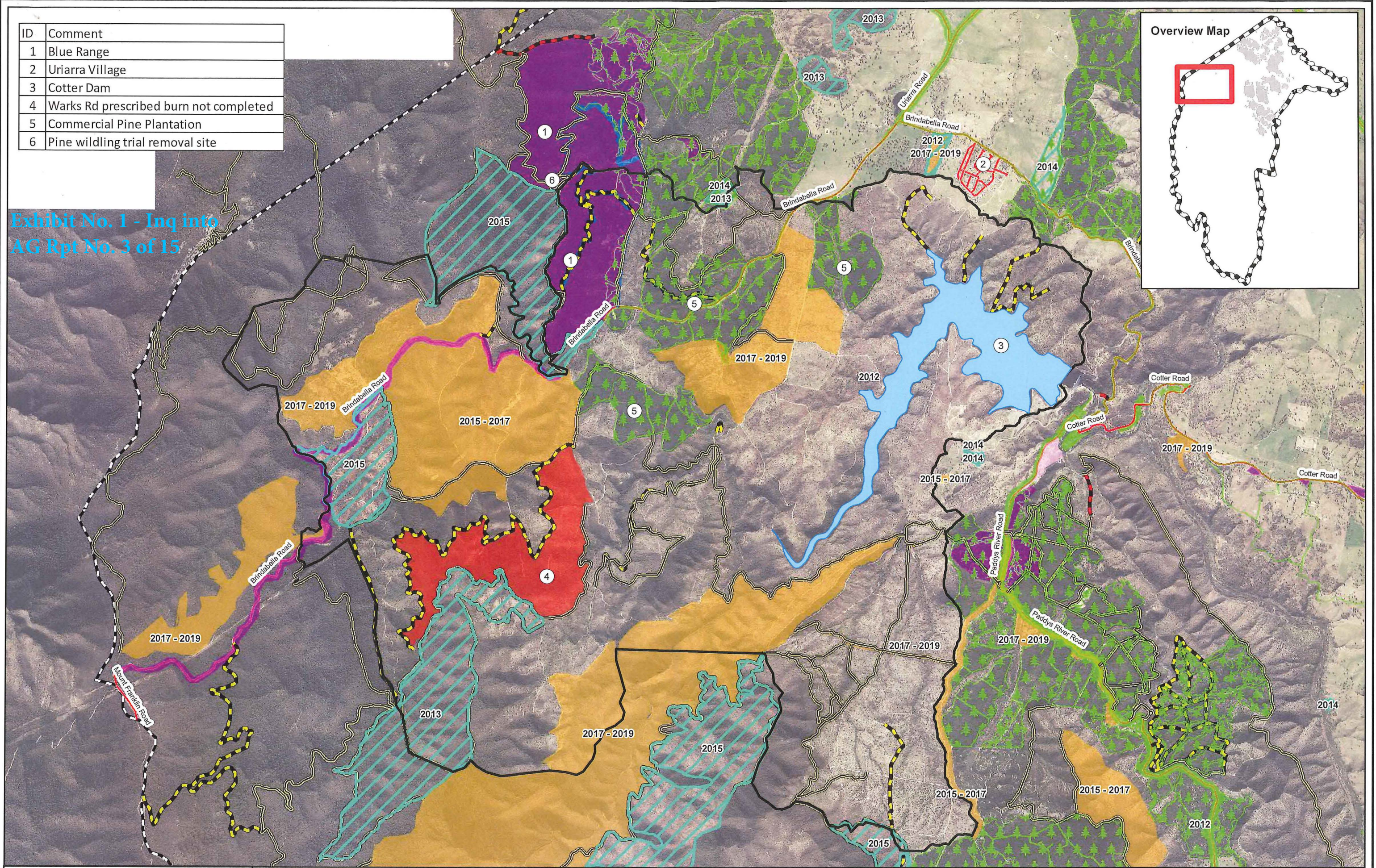
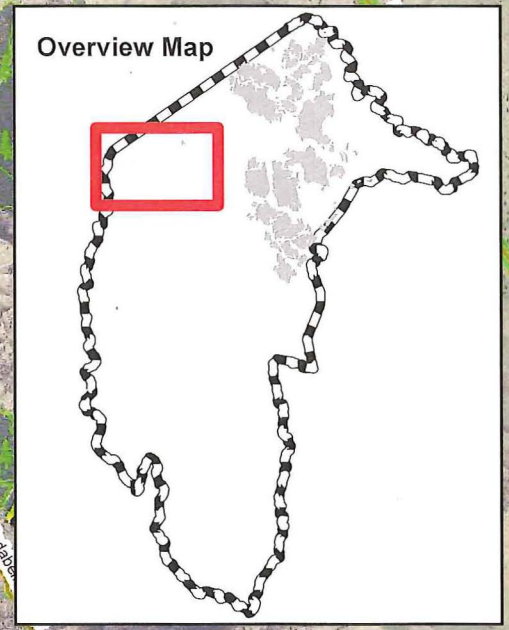


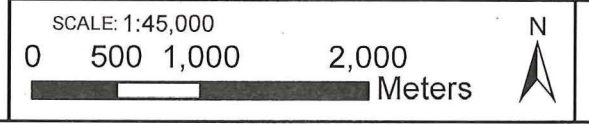
ID	Comment
1	Blue Range
2	Uriarra Village
3	Cotter Dam
4	Warks Rd prescribed burn not completed
5	Commercial Pine Plantation
6	Pine wildling trial removal site

Exhibit No. 1 - Inq into
AG Rpt No. 3 of 15



ACT Border		Fuel Management	
	ACT Border		Chemical
	LCC Boundary		Physical Removal
Access Management			Slashing
	Vegetation		Cancelled Burn
	Upgrade		Future Burn
	Construction		Completed Burns
	Maintenance		

Data produced by:
Fire, Forests & Roads
Parks & Conservation Service
Date: 30/03/2016



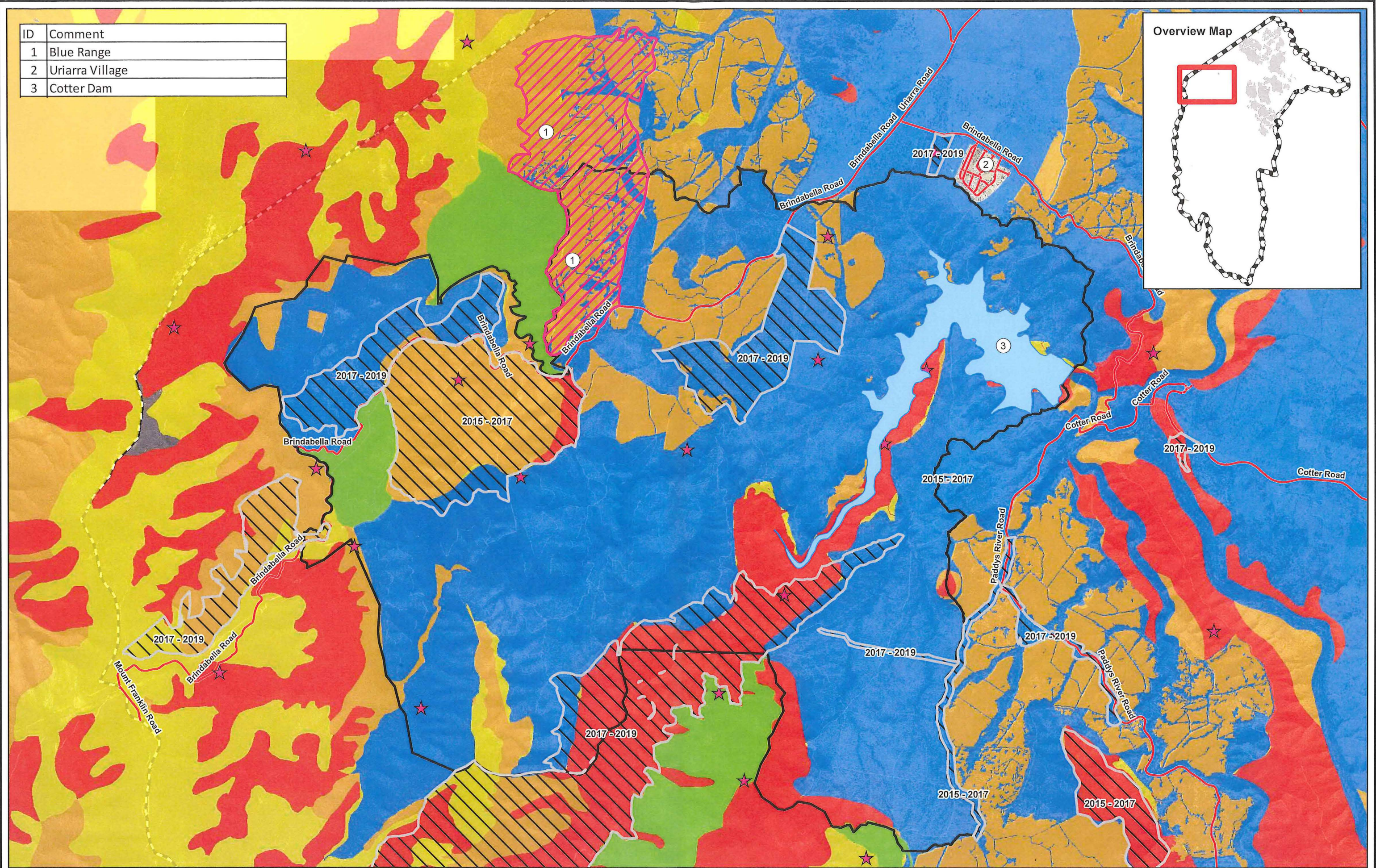
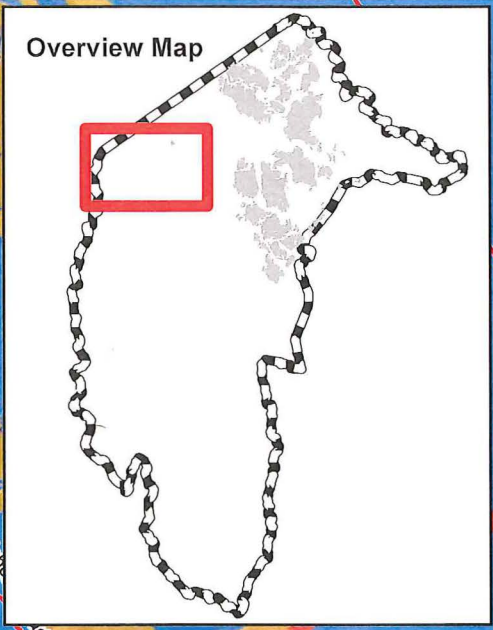
DISCLAIMER
Whilst all care has been taken in the preparation of this cadastral base map, TAMS accepts no responsibility for the accuracy of any information shown. Users should rely on their own enquiries in order to validate information shown on this map.
TAMS ----- Copyright Reserved.

Lower Cotter Catchment

Bushfire Operations Plan 2013/14 - 2015/16



ID	Comment
1	Blue Range
2	Uriarra Village
3	Cotter Dam



Legend

- Future Burn
- Assessment Site
- LCC Boundary
- ACT Border

Fuel Hazard

- High
- Very High
- Moderate
- Low
- Extreme

Data produced by:
Fire, Forests & Roads
Parks & Conservation Service

Date: 30/03/2016

SCALE: 1:45,000

0 500 1,000 2,000 Meters

DISCLAIMER
Whilst all care has been taken in the preparation of this cadastral base map, TAMS accepts no responsibility for the accuracy of any information shown. Users should rely on their own enquiries in order to validate information shown on this map.
TAMS ----- Copyright Reserved.

Lower Cotter Catchment

Estimated Overall Fuel Hazard Assessment